

# Concept Fire Truck (CFT)

Concept study for the fire truck of the future



## Base specification

---

### Vehicle concept:

- › Electric power: 350 kW
- › Length: 7,600 mm
- › Width: 2,350 mm
- › Height: 3,065 mm
- › Wheelbase: 3,800 mm
- › Weight empty: 10,500 kg
- › Weight full: 17,600 kg
- › Adjustable ground clearance: 250-350 mm
- › Aluminium superstructure

### Crew cockpit:

- › CFT integrated crew cockpit
- › Command & communication center
- › Crew: 1+7
- › 4 SCBA COMFORT brackets
- › 2 crew cab sliding glass doors
- › Access height: 150 mm

### Equipment compartment:

- › COMFORT fixing systems for optimal retrieval and secure storage
- › Color coding for handles and controls

### Control system:

- › Rosenbauer intuitive control based on CAN-bus technology for all electrical functions

### Extinguishing system:

- › Normal pressure pump NH35 acc. EN 1028
- › FPN: 3,000 l/min @ 10 bar
- › FPH: 250 l / min @ 40 bar
- › Pump drive electric or mechanic
- › Water tank content: 1,200 l

### Light concept:

- › Integrated high performance and shadowless LED surround illumination
- › Adjustable LED ambient lighting in the crew cab
- › LED compartment lighting

### Communication:

- › WLAN hotspot
- › External displays

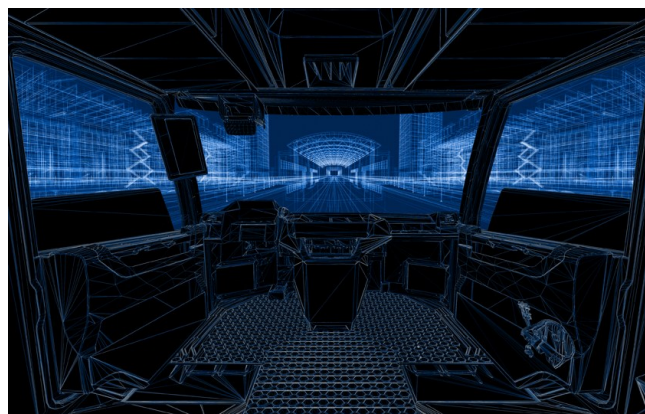
# Concept Fire Truck (CFT)

Concept study for the fire truck of the future



## Dimensions and weight

L x W x H	7,600 x 2,350 x 3,065 mm
Permissible total weight	17,600 kg



## Contact

Rosenbauer International AG  
Paschinger Straße 90  
4060 Leonding, Austria  
Tel.: +43 732 6794-0  
Fax: +43 732 6794-91

[www.rosenbauer.com](http://www.rosenbauer.com)

[www.facebook.com/rosenbauergroup](https://www.facebook.com/rosenbauergroup)

Text and images non-binding. The images may depict special editions that are only available at an additional charge.  
Subject to change due to technical advances.

Vers. 1.0  
PFin\_2017-03-24